



S H E L L E Y
M E D I C A L
I M A G I N G
T E C H N O L O G I E S

Sales Office

London, Ontario, Canada

Phone: 1 (519) 690-0874

Fax: 1 (519) 690-0875

Email: sales@simutec.com

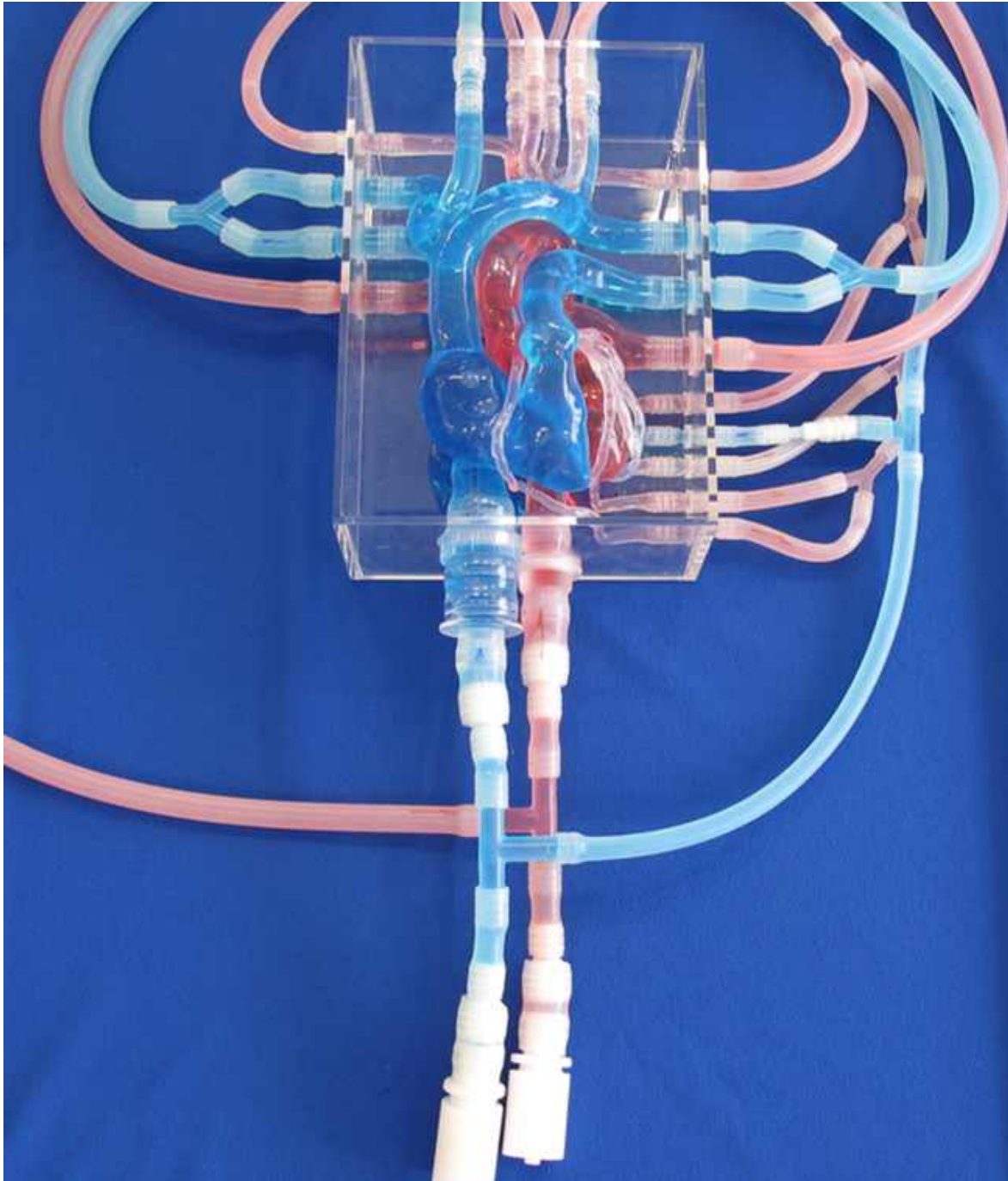
Web: www.simutec.com

WORLD LEADER
IN ANATOMICAL HUMAN
VASUCULAR REPLICAS



Anatomical silicone heart model with arterial and venous circulations

Model: T-S-N-020+



These models are compatible with modern imaging modalities such as digital subtraction angiography, computed tomography and magnetic resonance imaging. Providing the use of an adequate circulating fluid, Doppler techniques can also be performed. The in vitro models transparency to light makes them suitable for video and photographic monitoring.



S H E L L E Y
M E D I C A L
I M A G I N G
T E C H N O L O G I E S

Sales Office

London, Ontario, Canada

Phone: 1 (519) 690-0874

Fax: 1 (519) 690-0875

Email: sales@simutec.com

Web: www.simutec.com

**WORLD LEADER
IN ANATOMICAL HUMAN
VASUCULAR REPLICAS**



These models are compatible with modern imaging modalities such as digital subtraction angiography, computed tomography and magnetic resonance imaging. Providing the use of an adequate circulating fluid, Doppler techniques can also be performed. The in vitro models transparency to light makes them suitable for video and photographic monitoring.



S H E L L E Y
M E D I C A L
I M A G I N G
T E C H N O L O G I E S

Sales Office

London, Ontario, Canada

Phone: 1 (519) 690-0874

Fax: 1 (519) 690-0875

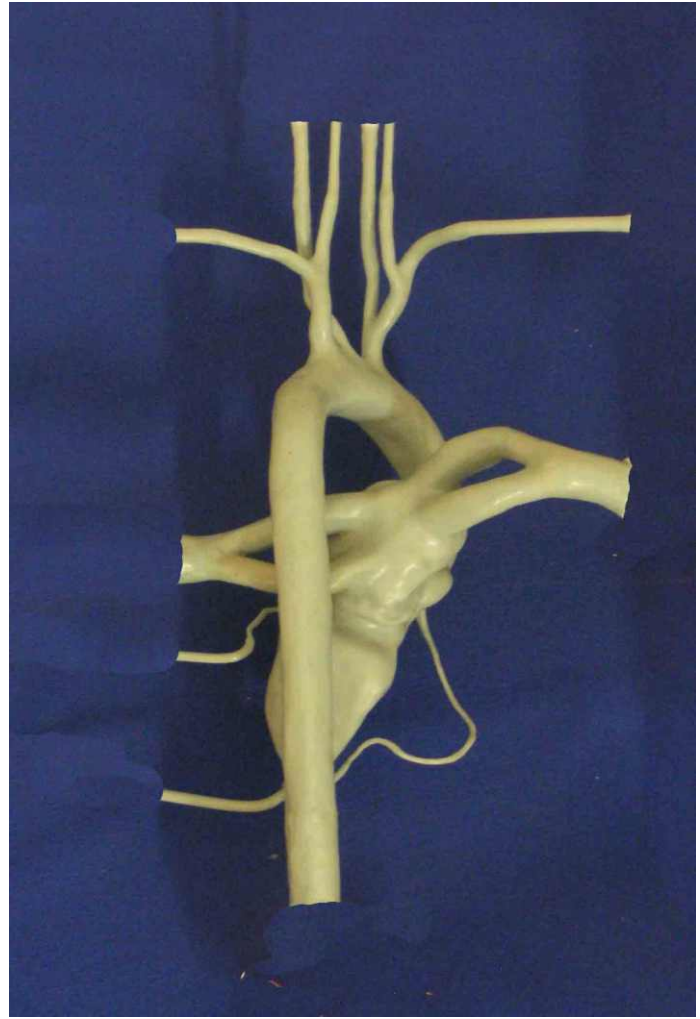
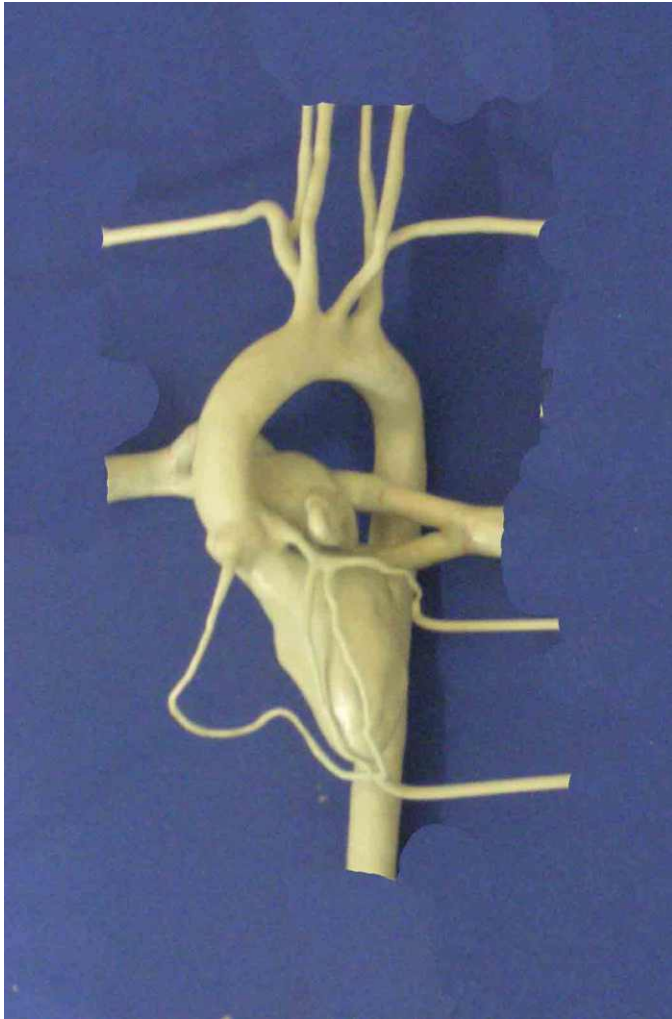
Email: sales@simutec.com

Web: www.simutec.com

**WORLD LEADER
IN ANATOMICAL HUMAN
VASUCULAR REPLICAS**



Arterial anatomical cores



These models are compatible with modern imaging modalities such as digital subtraction angiography, computed tomography and magnetic resonance imaging. Providing the use of an adequate circulating fluid, Doppler techniques can also be performed. The in vitro models transparency to light makes them suitable for video and photographic monitoring.



S H E L L E Y
M E D I C A L
I M A G I N G
T E C H N O L O G I E S

Sales Office

London, Ontario, Canada

Phone: 1 (519) 690-0874

Fax: 1 (519) 690-0875

Email: sales@simutec.com

Web: www.simutec.com



WORLD LEADER
IN ANATOMICAL HUMAN
VASUCULAR REPLICAS

Flexible silicone arterial model



These models are compatible with modern imaging modalities such as digital subtraction angiography, computed tomography and magnetic resonance imaging. Providing the use of an adequate circulating fluid, Doppler techniques can also be performed. The in vitro models transparency to light makes them suitable for video and photographic monitoring.



S H E L L E Y
M E D I C A L
I M A G I N G
T E C H N O L O G I E S

Sales Office

London, Ontario, Canada

Phone: 1 (519) 690-0874

Fax: 1 (519) 690-0875

Email: sales@simutec.com

Web: www.simutec.com

**WORLD LEADER
IN ANATOMICAL HUMAN
VASUCULAR REPLICAS**



Flexible silicone arterial model



These models are compatible with modern imaging modalities such as digital subtraction angiography, computed tomography and magnetic resonance imaging. Providing the use of an adequate circulating fluid, Doppler techniques can also be performed. The in vitro models transparency to light makes them suitable for video and photographic monitoring.



S H E L L E Y
M E D I C A L
I M A G I N G
T E C H N O L O G I E S

Sales Office

London, Ontario, Canada

Phone: 1 (519) 690-0874

Fax: 1 (519) 690-0875

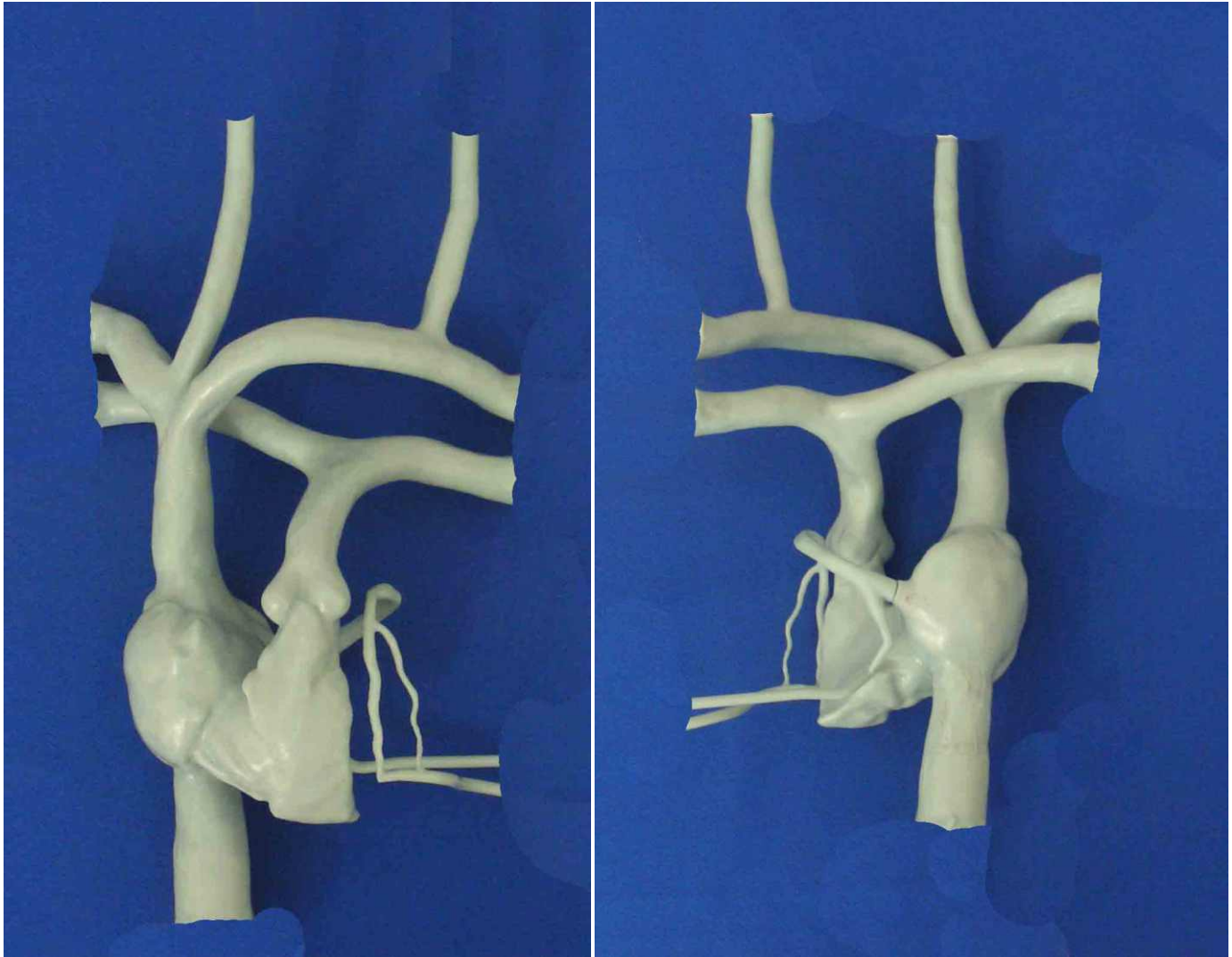
Email: sales@simutec.com

Web: www.simutec.com

**WORLD LEADER
IN ANATOMICAL HUMAN
VASUCULAR REPLICAS**



Venous anatomical cores



These models are compatible with modern imaging modalities such as digital subtraction angiography, computed tomography and magnetic resonance imaging. Providing the use of an adequate circulating fluid, Doppler techniques can also be performed. The in vitro models transparency to light makes them suitable for video and photographic monitoring.



S H E L L E Y
M E D I C A L
I M A G I N G
T E C H N O L O G I E S

Sales Office

London, Ontario, Canada

Phone: 1 (519) 690-0874

Fax: 1 (519) 690-0875

Email: sales@simutec.com

Web: www.simutec.com

**WORLD LEADER
IN ANATOMICAL HUMAN
VASUCULAR REPLICAS**



Flexible silicone venous model



These models are compatible with modern imaging modalities such as digital subtraction angiography, computed tomography and magnetic resonance imaging. Providing the use of an adequate circulating fluid, Doppler techniques can also be performed. The in vitro models transparency to light makes them suitable for video and photographic monitoring.



S H E L L E Y
M E D I C A L
I M A G I N G
T E C H N O L O G I E S

Sales Office

London, Ontario, Canada

Phone: 1 (519) 690-0874

Fax: 1 (519) 690-0875

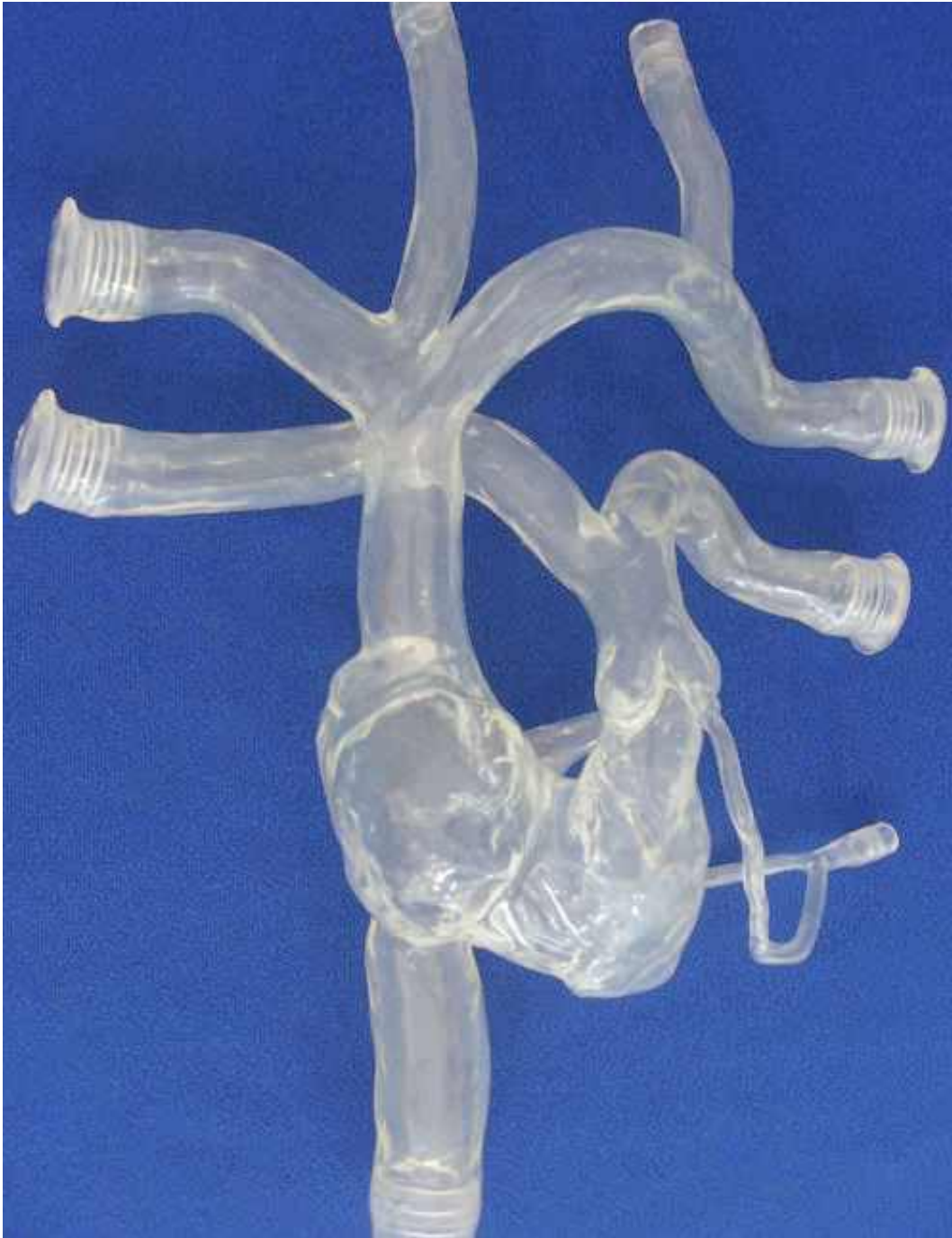
Email: sales@simutec.com

Web: www.simutec.com



**WORLD LEADER
IN ANATOMICAL HUMAN
VASCULAR REPLICAS**

Flexible silicone venous model



These models are compatible with modern imaging modalities such as digital subtraction angiography, computed tomography and magnetic resonance imaging. Providing the use of an adequate circulating fluid, Doppler techniques can also be performed. The in vitro models transparency to light makes them suitable for video and photographic monitoring.